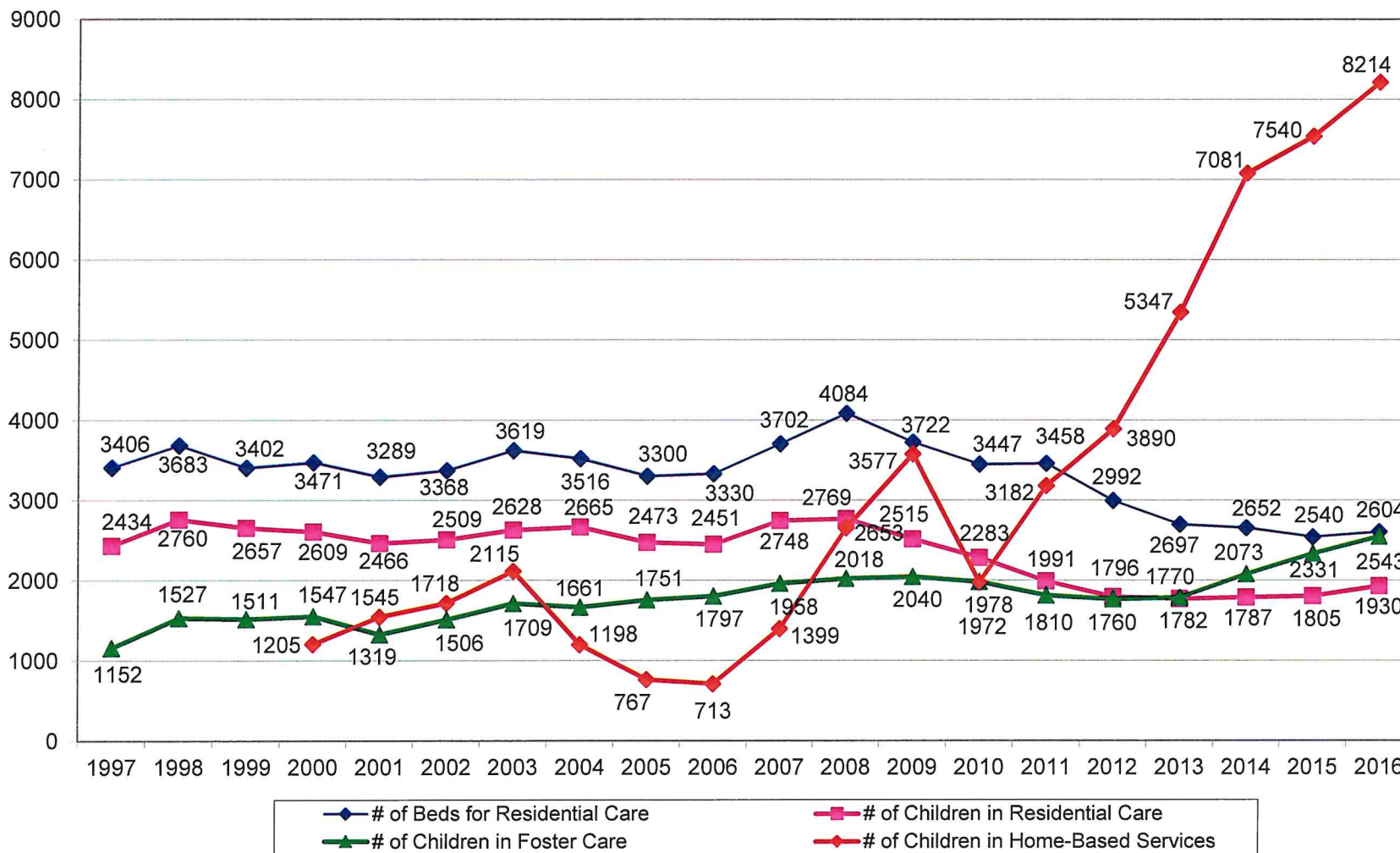
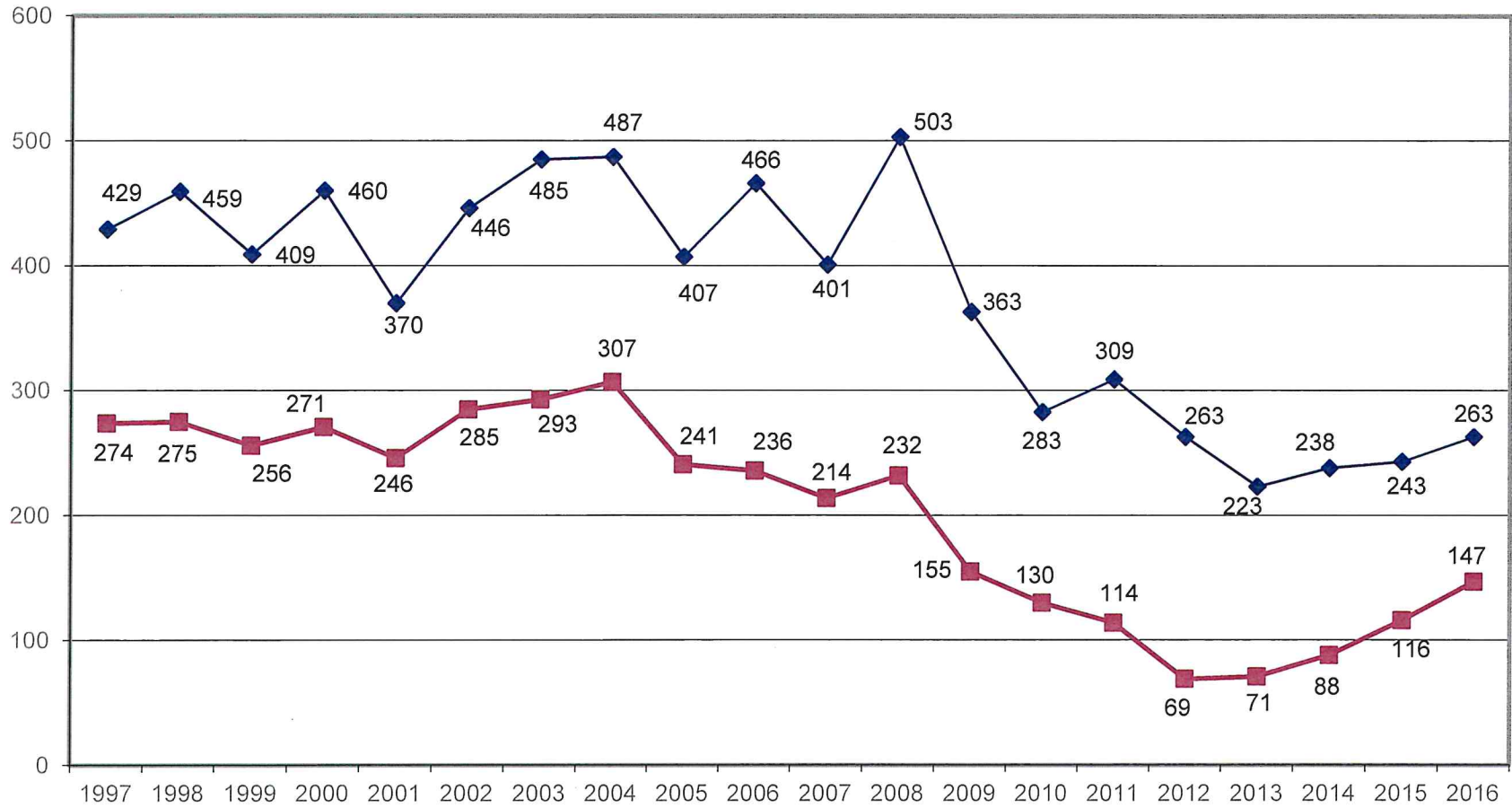


## IARCA Survey of Children in Residential and Foster Care

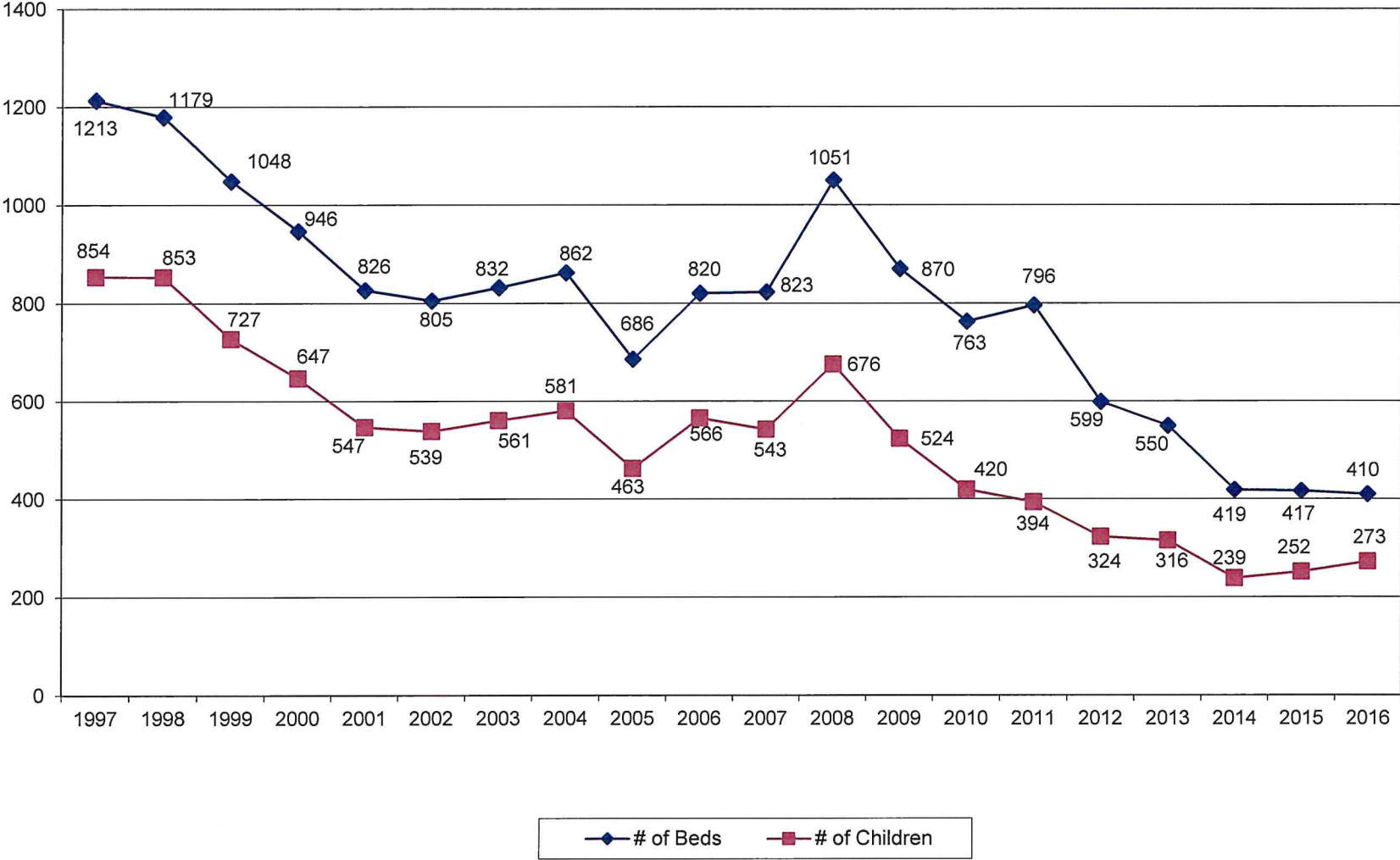


### IARCA Survey of Children in Emergency Shelter Care

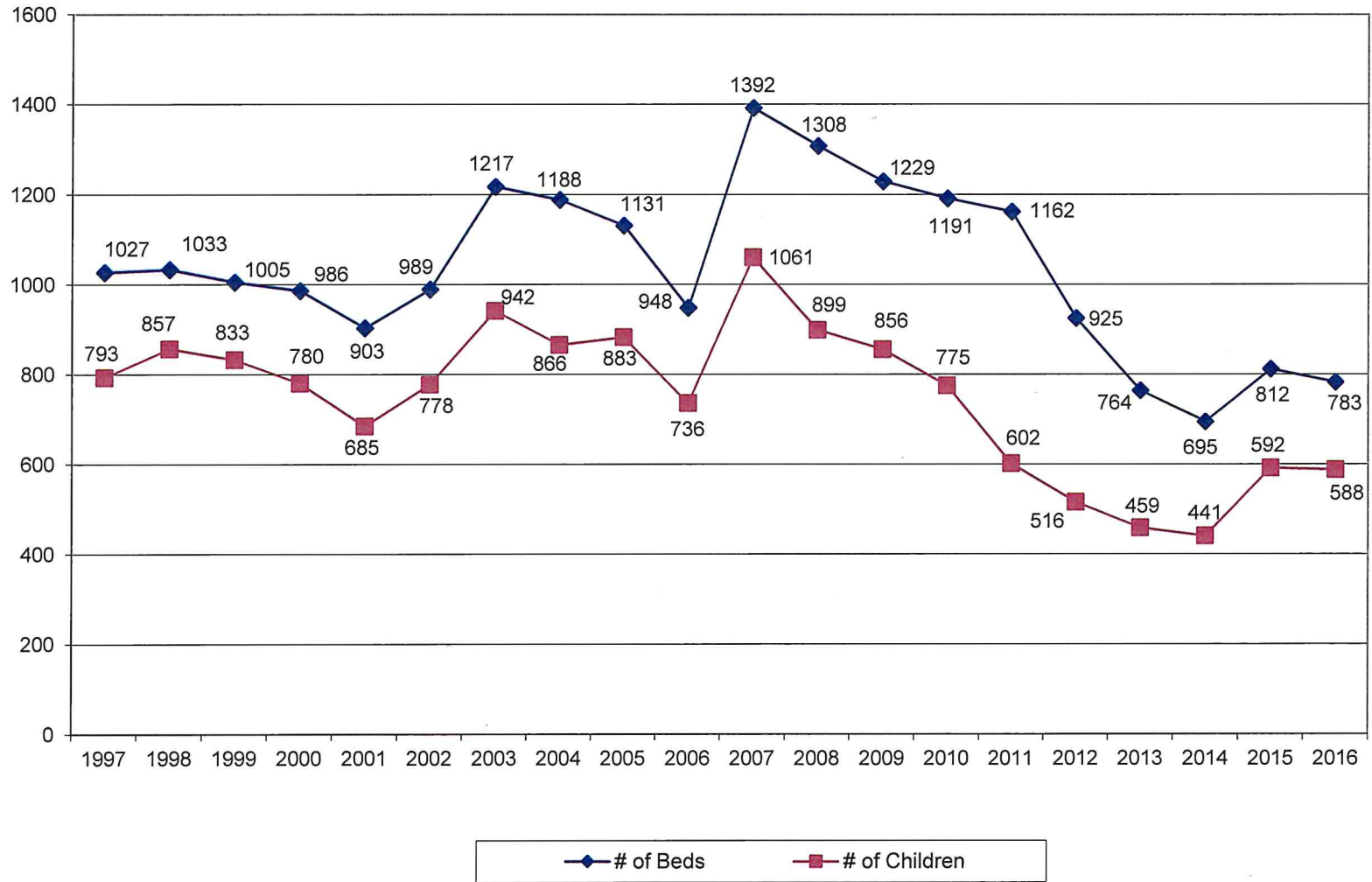


◆ # of Beds      ■ # of Children

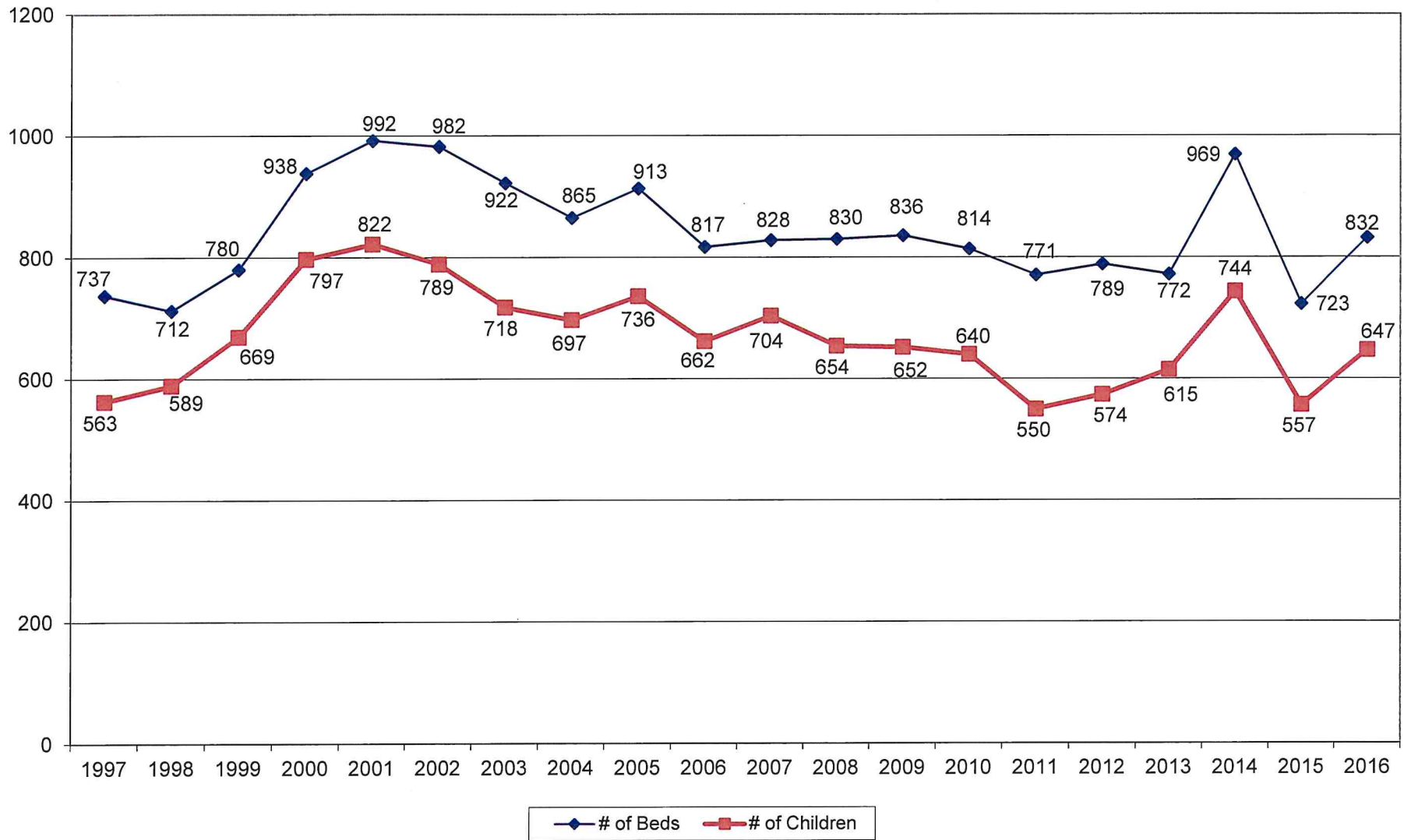
### IARCA Survey of Children in Open Residential Using Public Schools



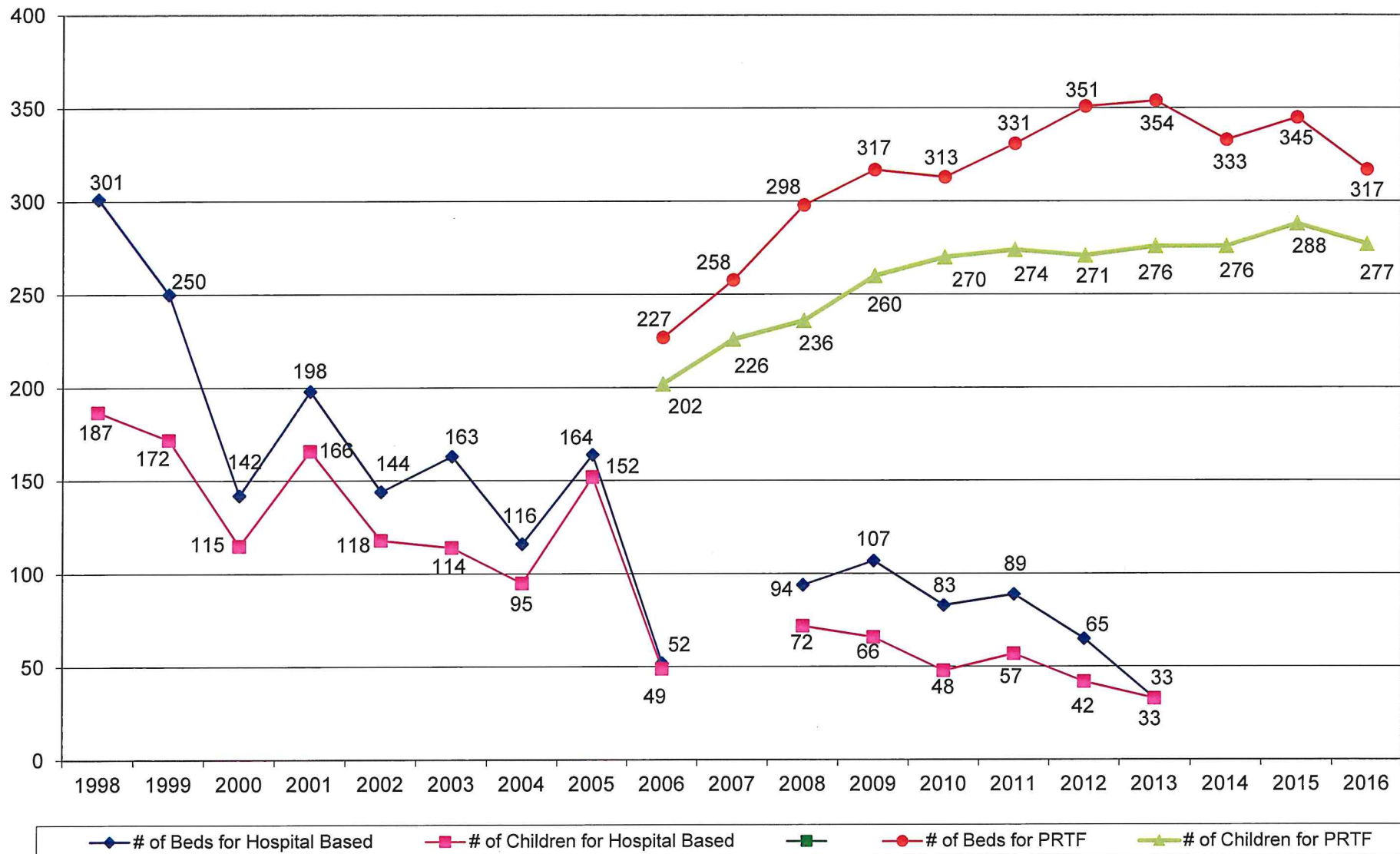
### IARCA Survey of Children in Open Residential with On- Ground Schools



### IARCA Survey of Children in Secure Care



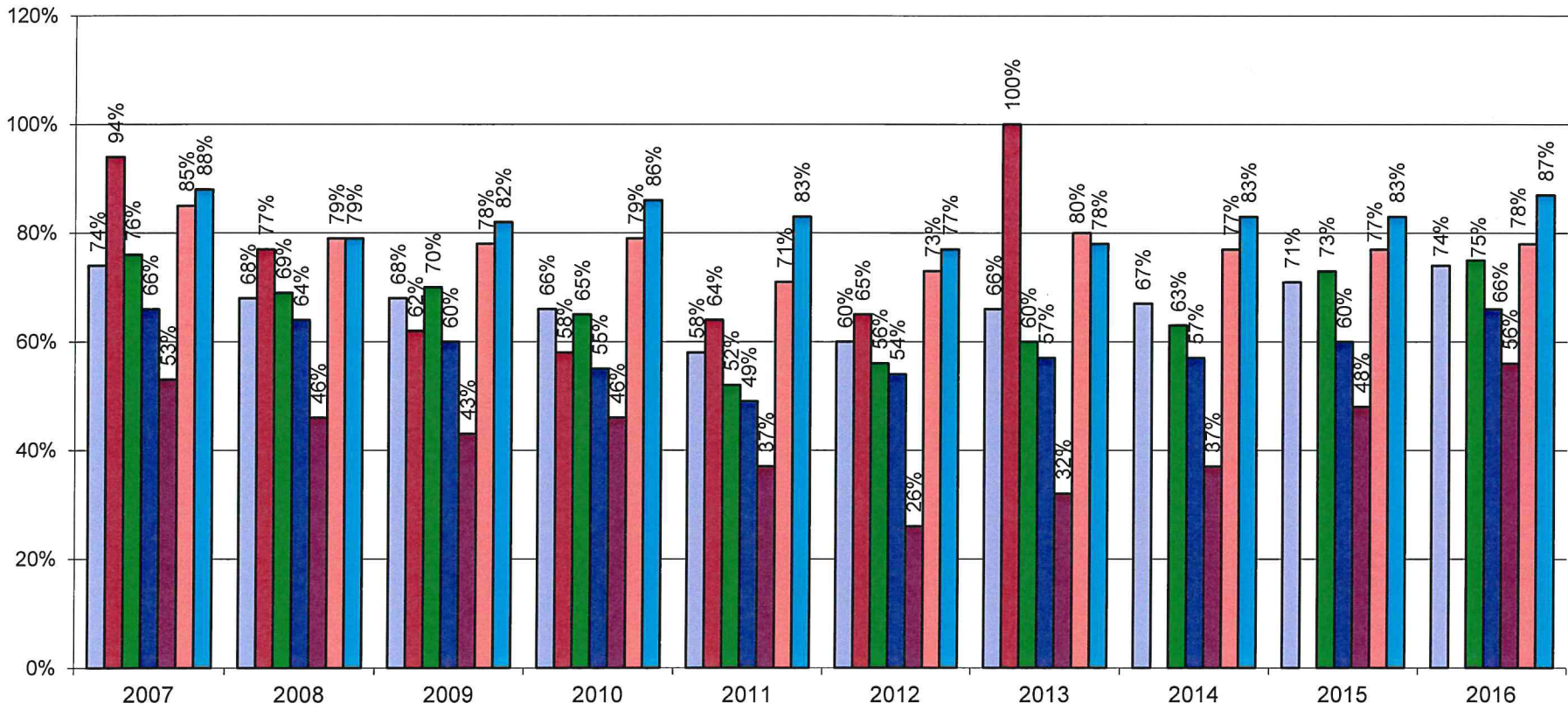
## IARCA Survey of Children in Hospital-Based Residential Care and Psychiatric Residential Treatment Facilities (PRTF)\*



\* New Category in 2006

\* Not Reported

IARCA Survey of Children in Residential Care Percent of Occupancy



- Residential Care (All Types)
- Hospital-Based Residential Care
- Open Residential with On-Ground School
- Open Residential Using Public School
- Emergency Shelter Care
- Secure Care
- PRTF