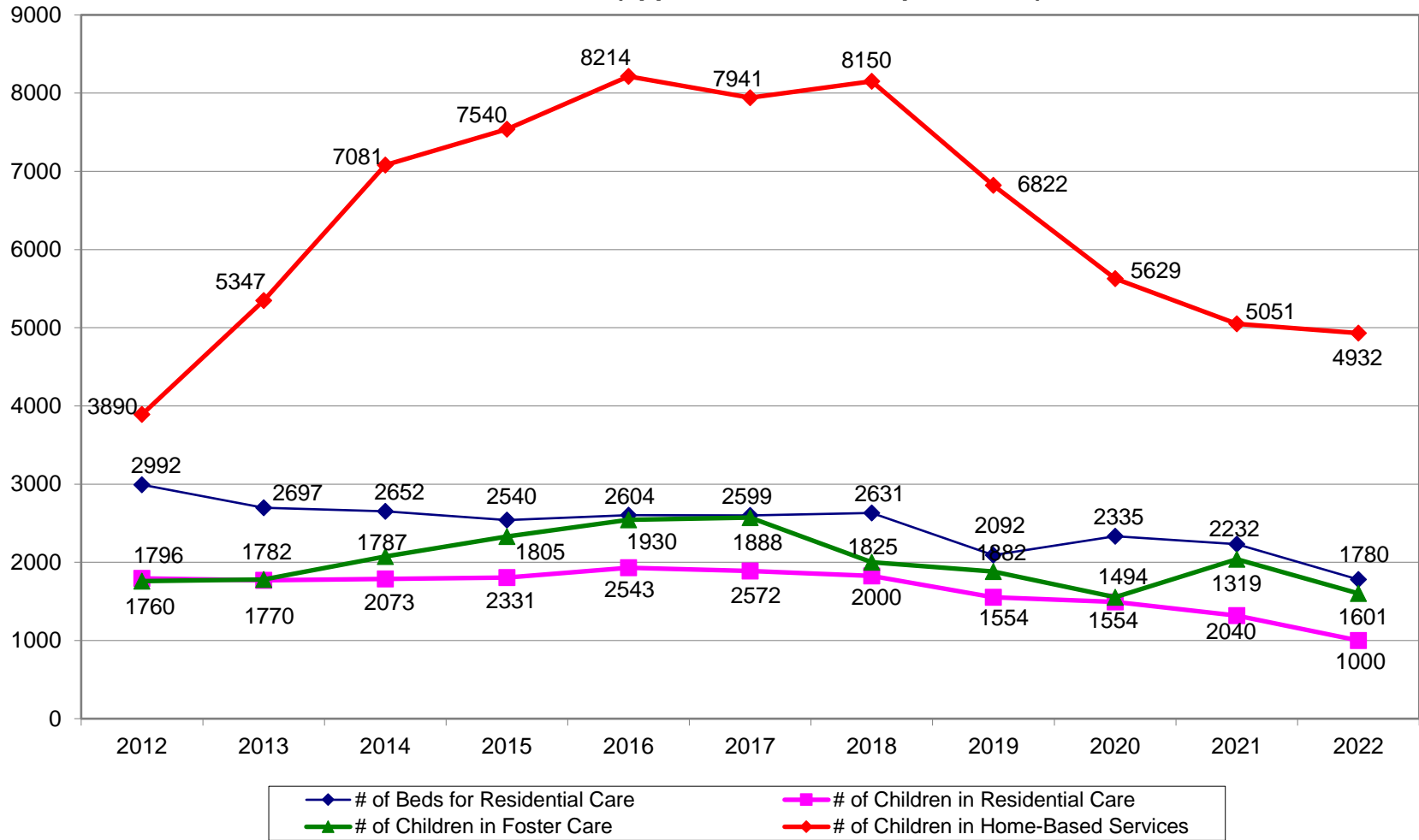
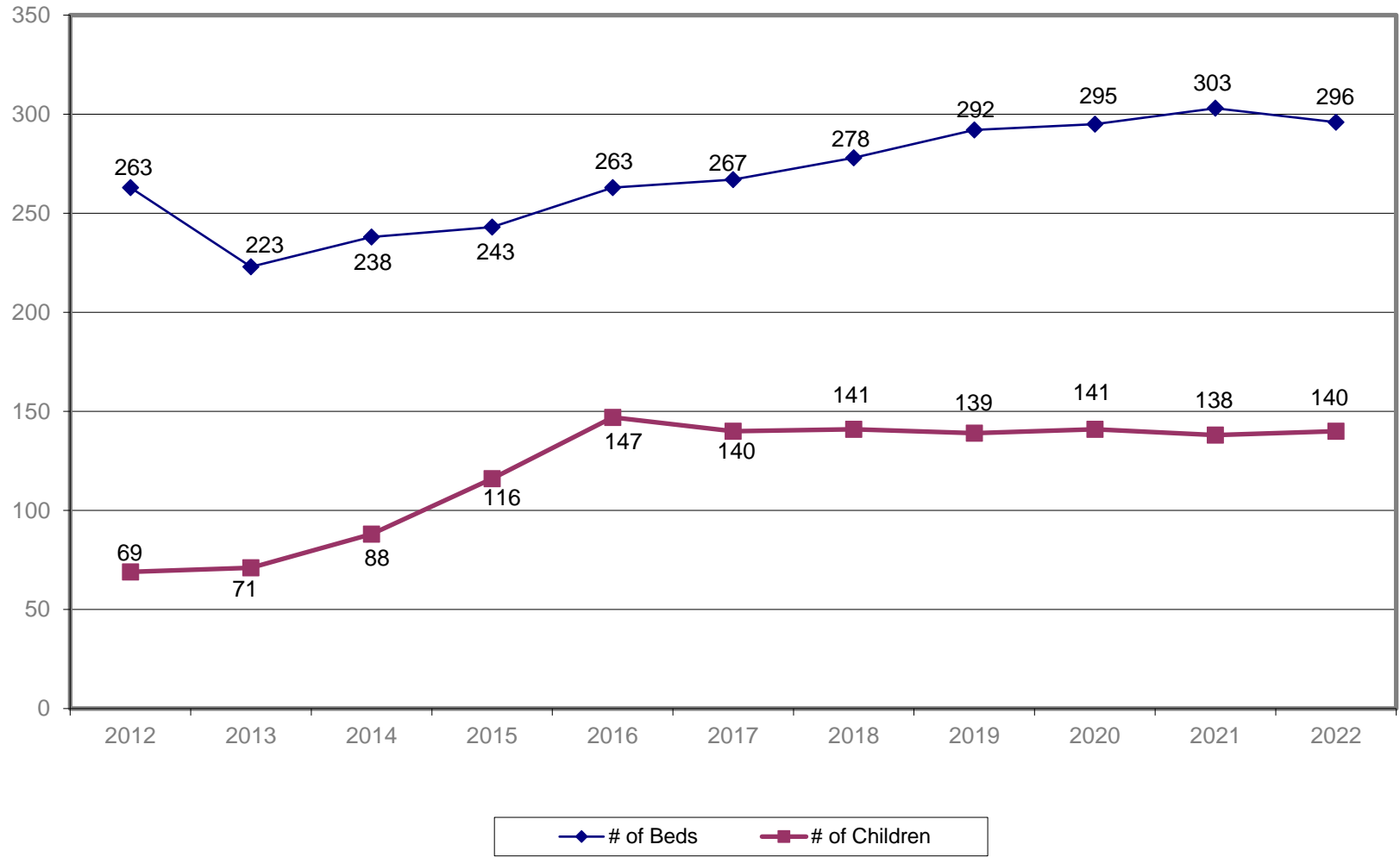


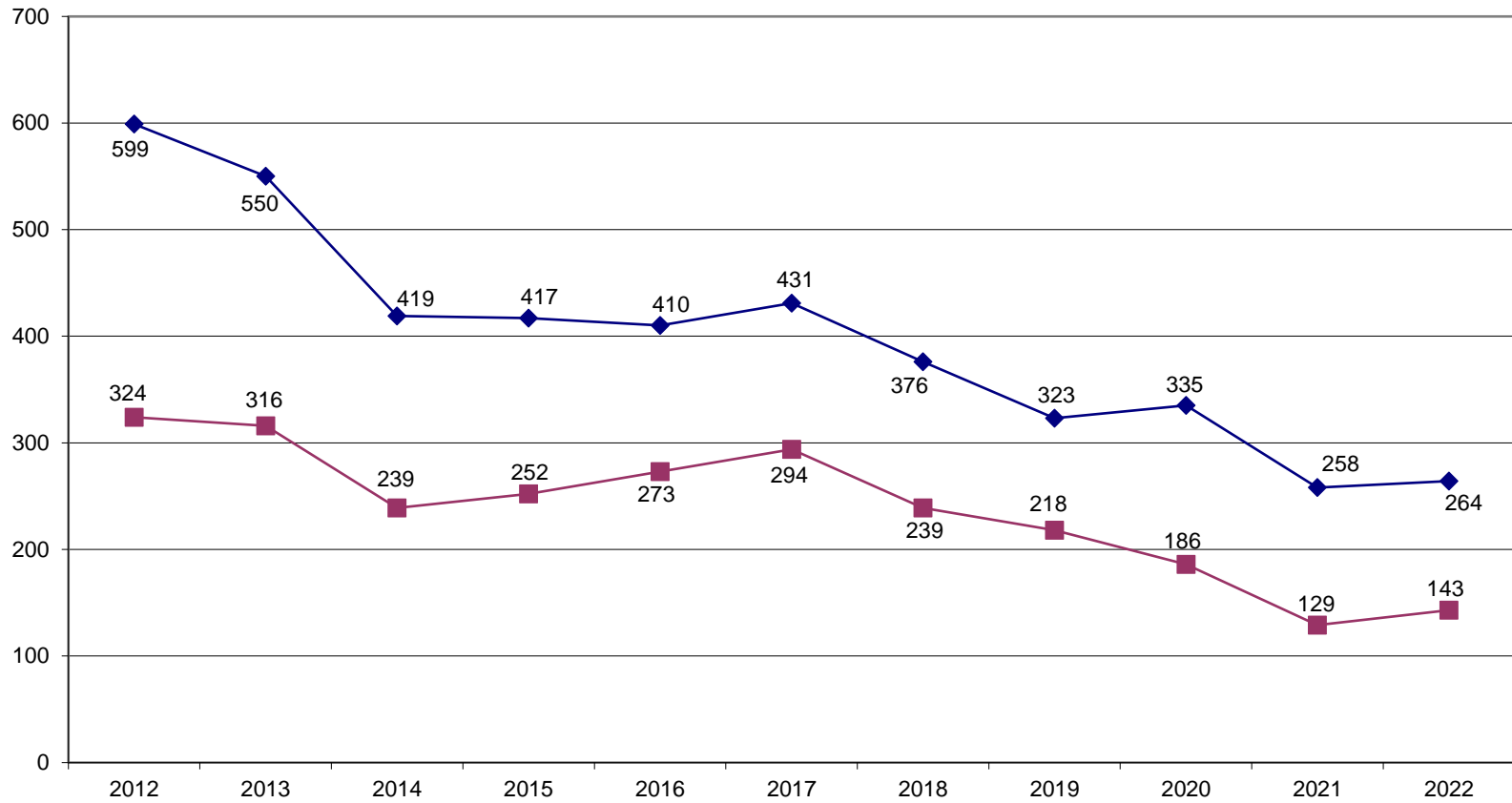
**IARCA Survey of Children Receiving Services from Participating Agencies
(approximate number per month)**



IARCA Survey of Children in Emergency Shelter Care

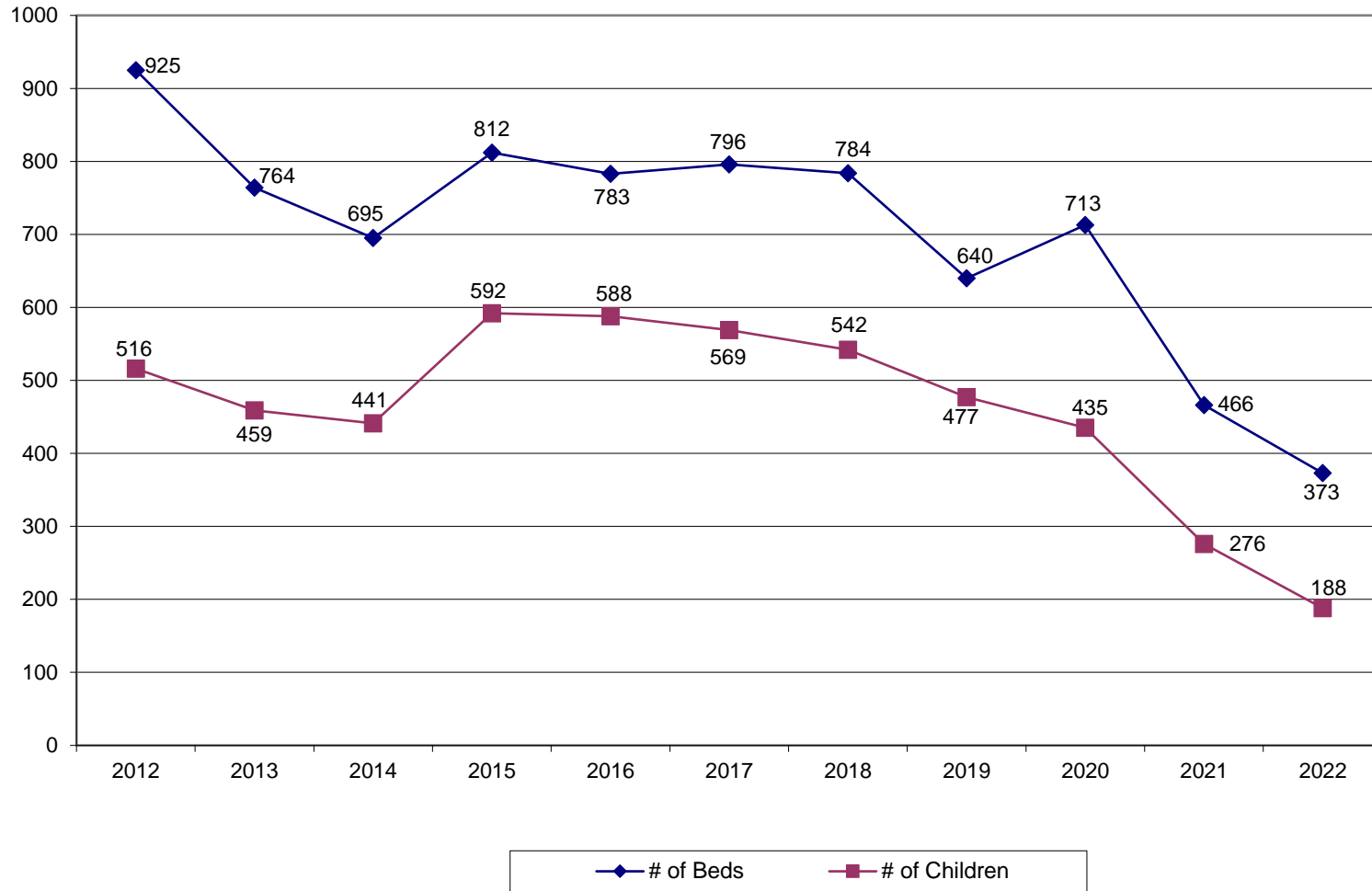


IARCA Survey of Children in Open Residential Using Public Schools

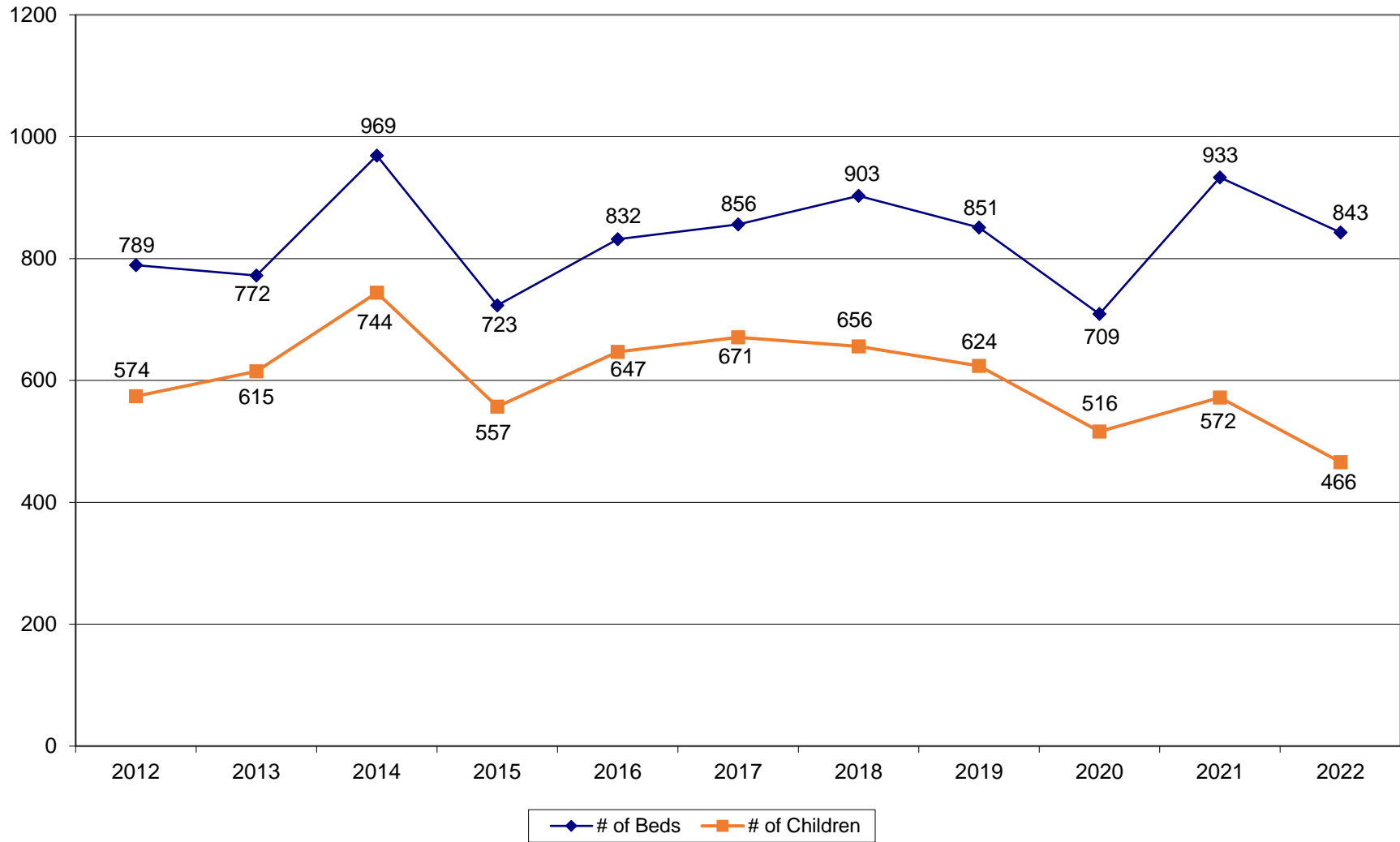


◆ # of Beds ■ # of Children

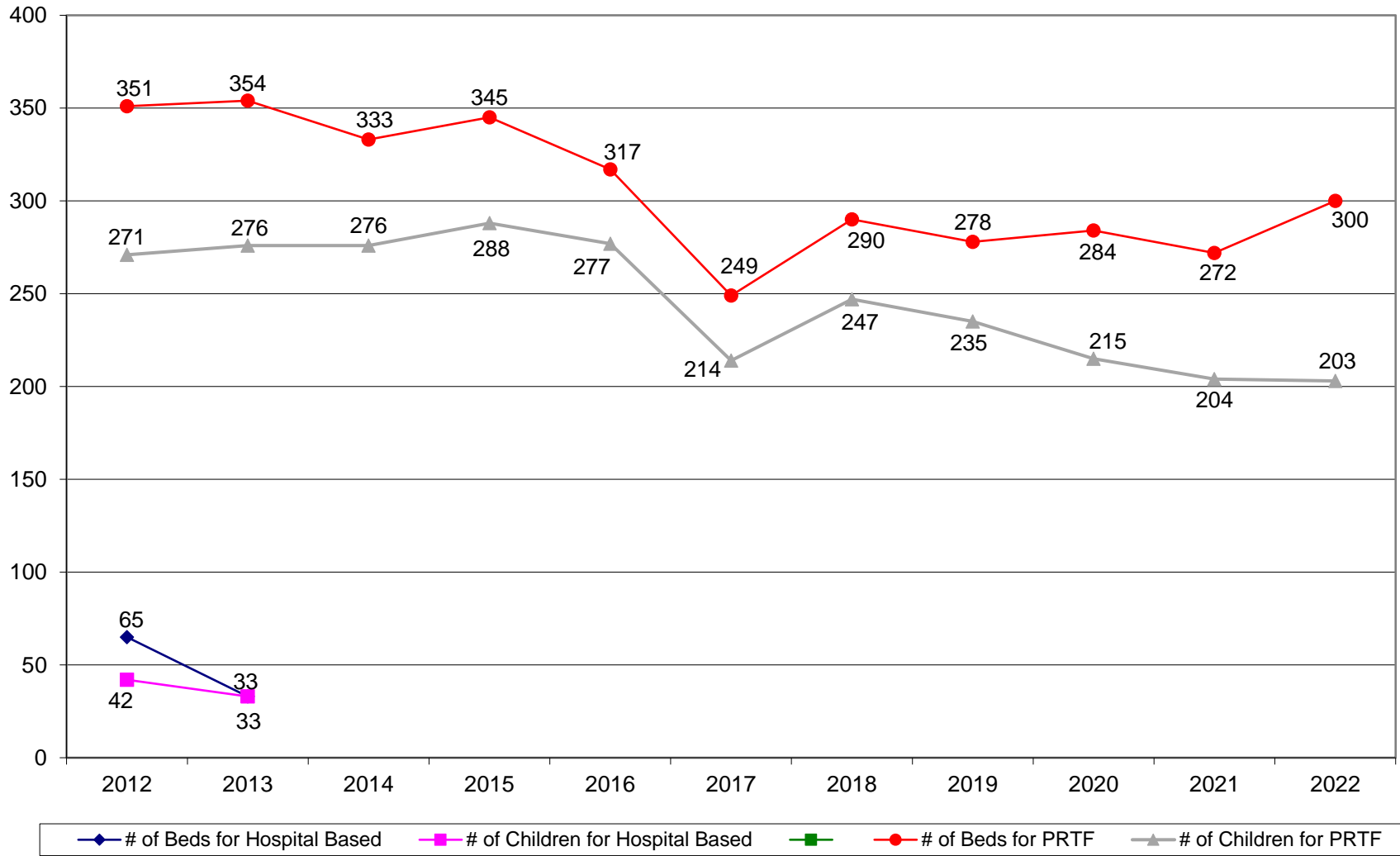
IARCA Survey of Children in Open Residential with On- Ground Schools



IARCA Survey of Children in Secure Care

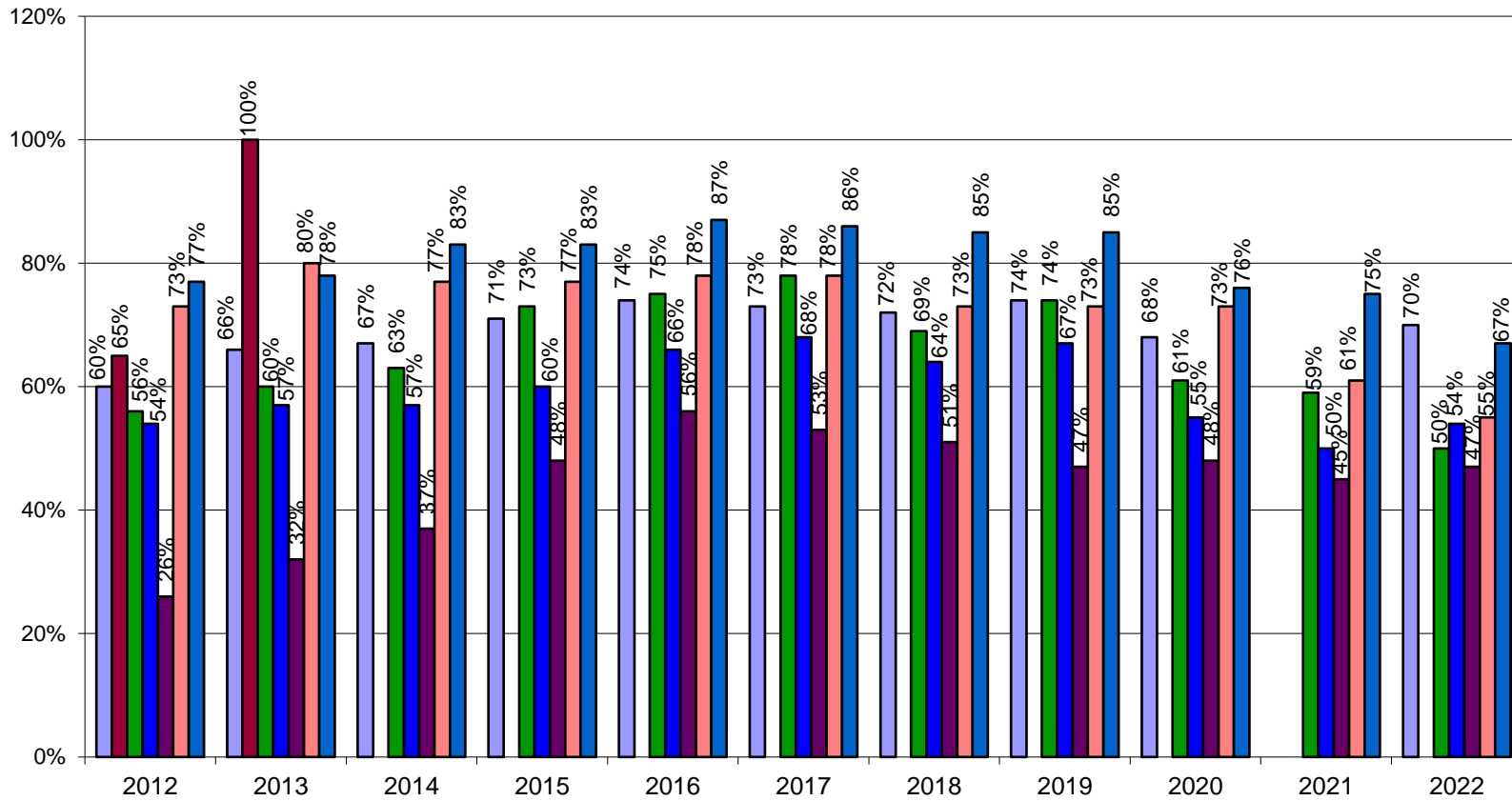


IARCA Survey of Children in Hospital-Based Residential Care and Psychiatric Residential Treatment Facilities (PRTF)*



* New Category in 2006

IARCA Survey of Children in Residential Care Percent of Occupancy



- Residential Care (All Types)
- Hospital-Based Residential Care
- Open Residential with On-Ground School
- Open Residential Using Public School
- Emergency Shelter Care
- Secure Care
- PRTF