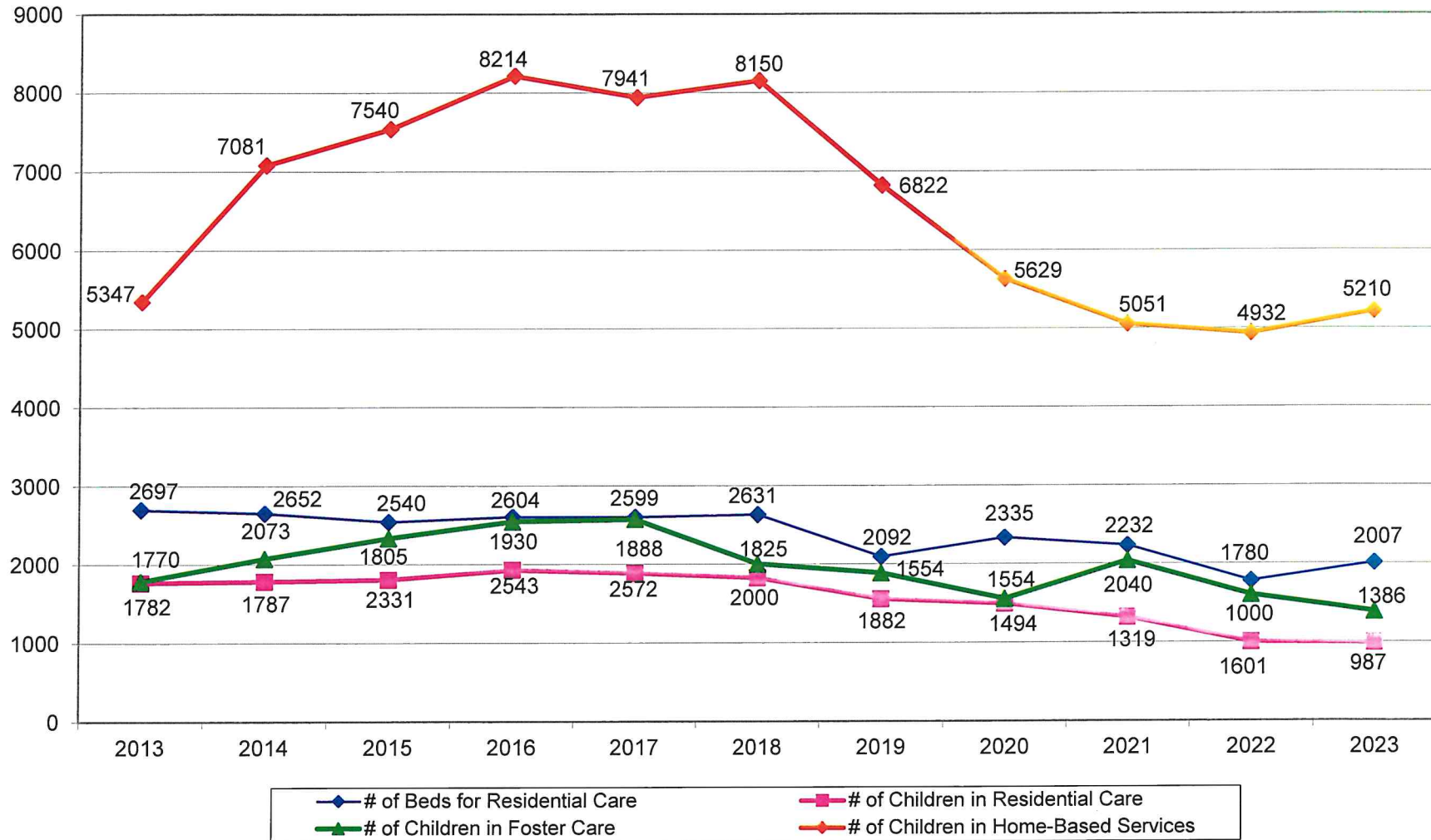
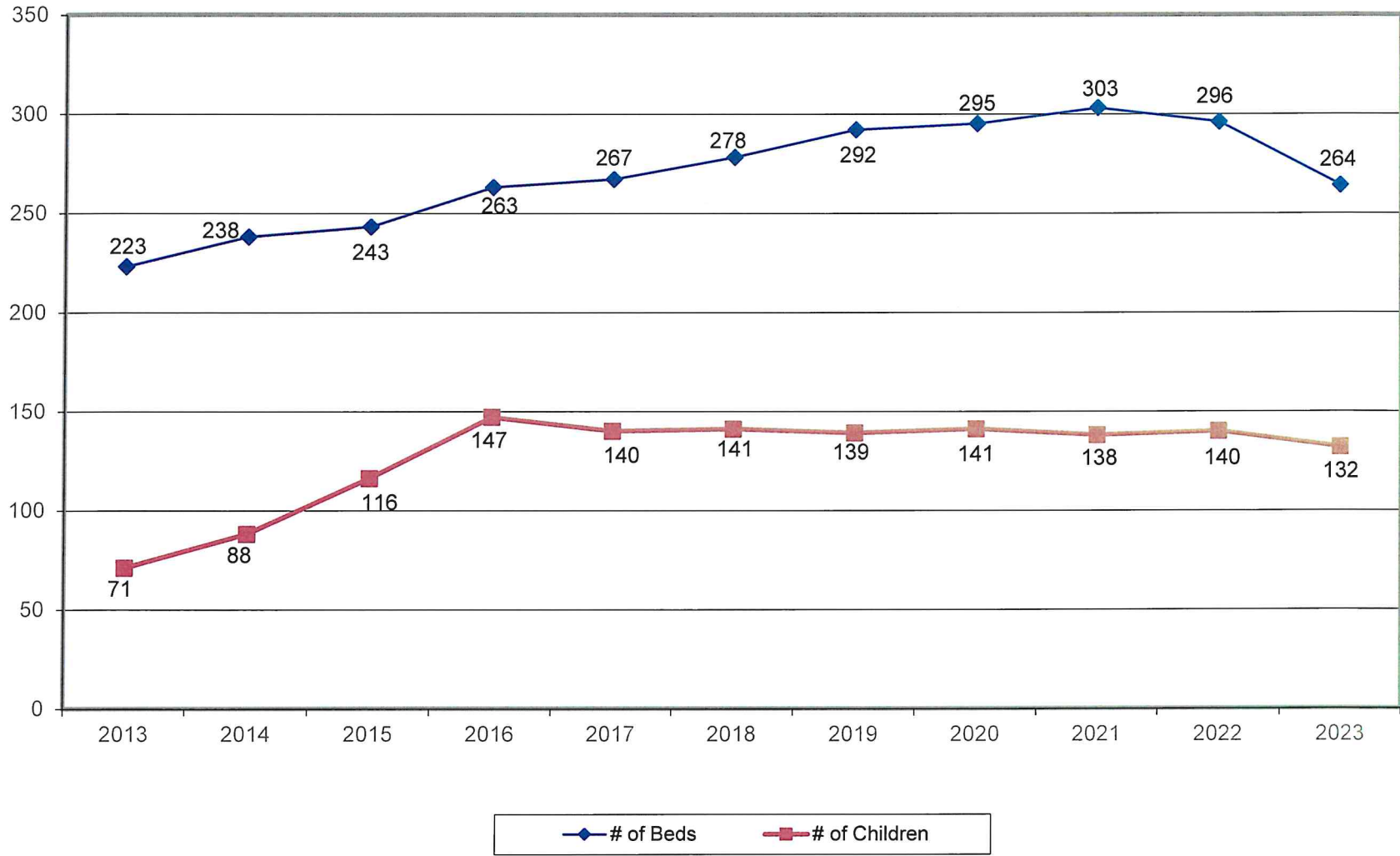


IARCA Survey of Children Receiving Services from Participating Agencies (approximate number per month)

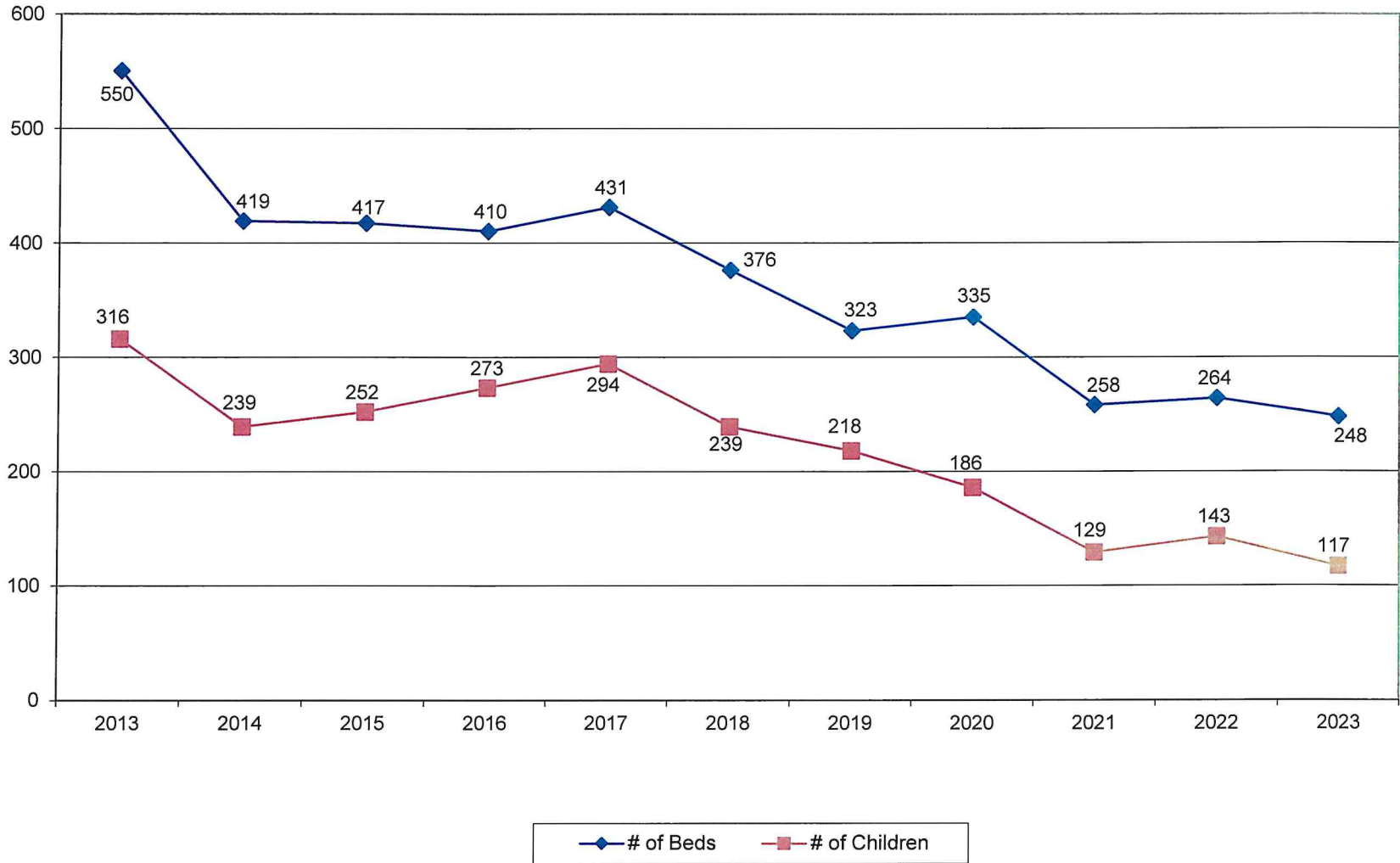


*2020 continued an unusual drop in home-based services per month. It's unclear if the drop in the services from our participating agencies is reflective of a statewide drop in services.

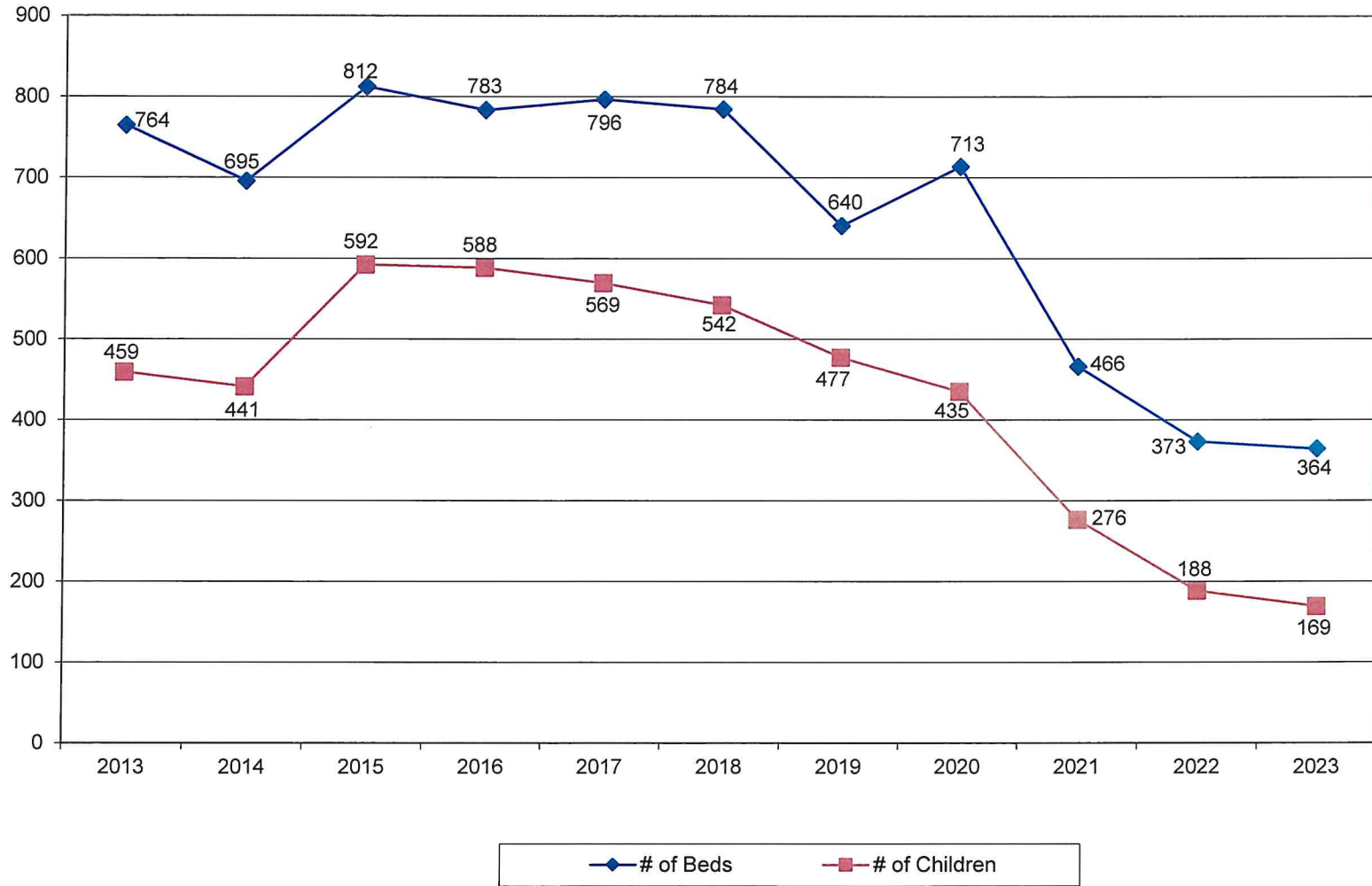
IARCA Survey of Children in Emergency Shelter Care



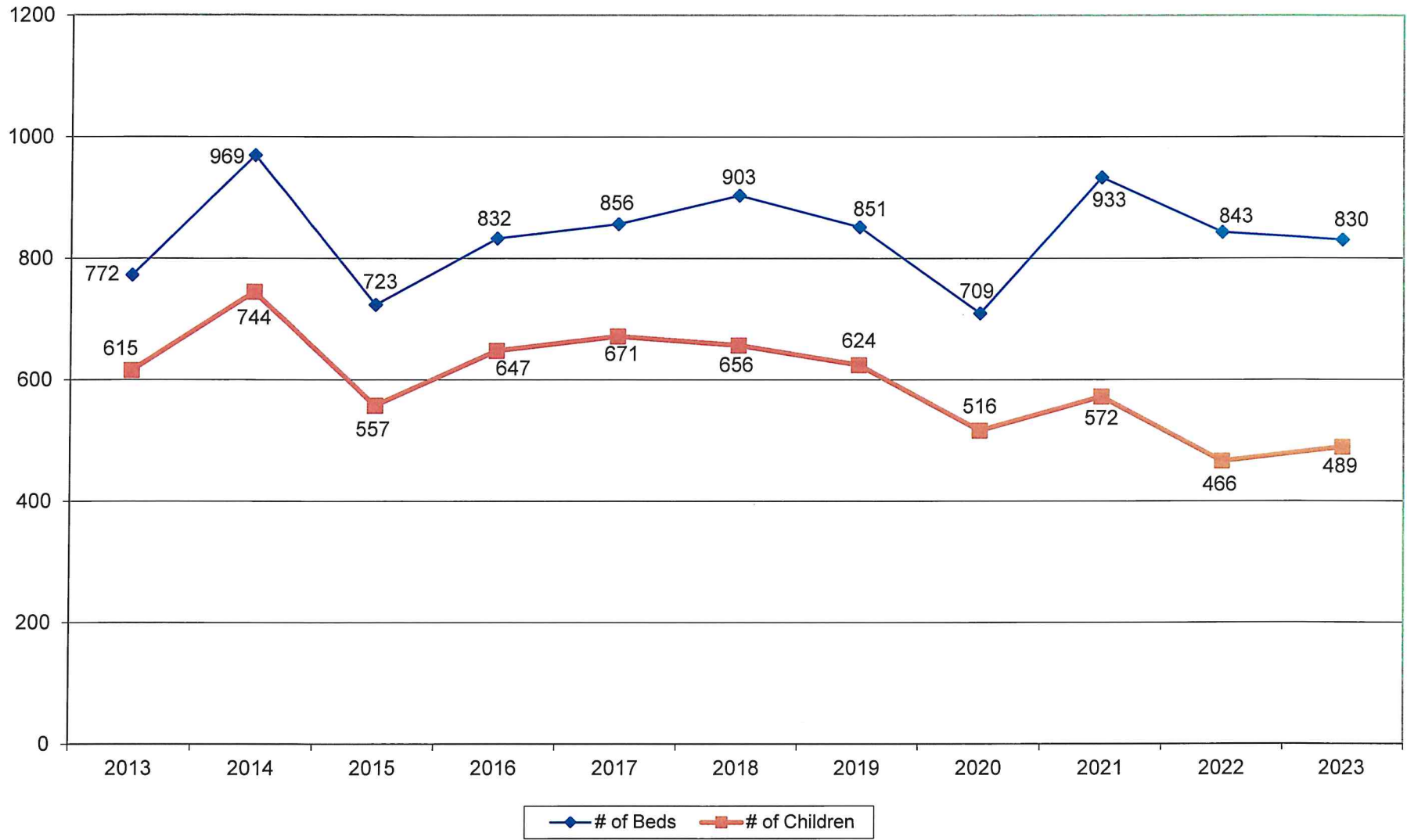
IARCA Survey of Children in Open Residential Using Public Schools



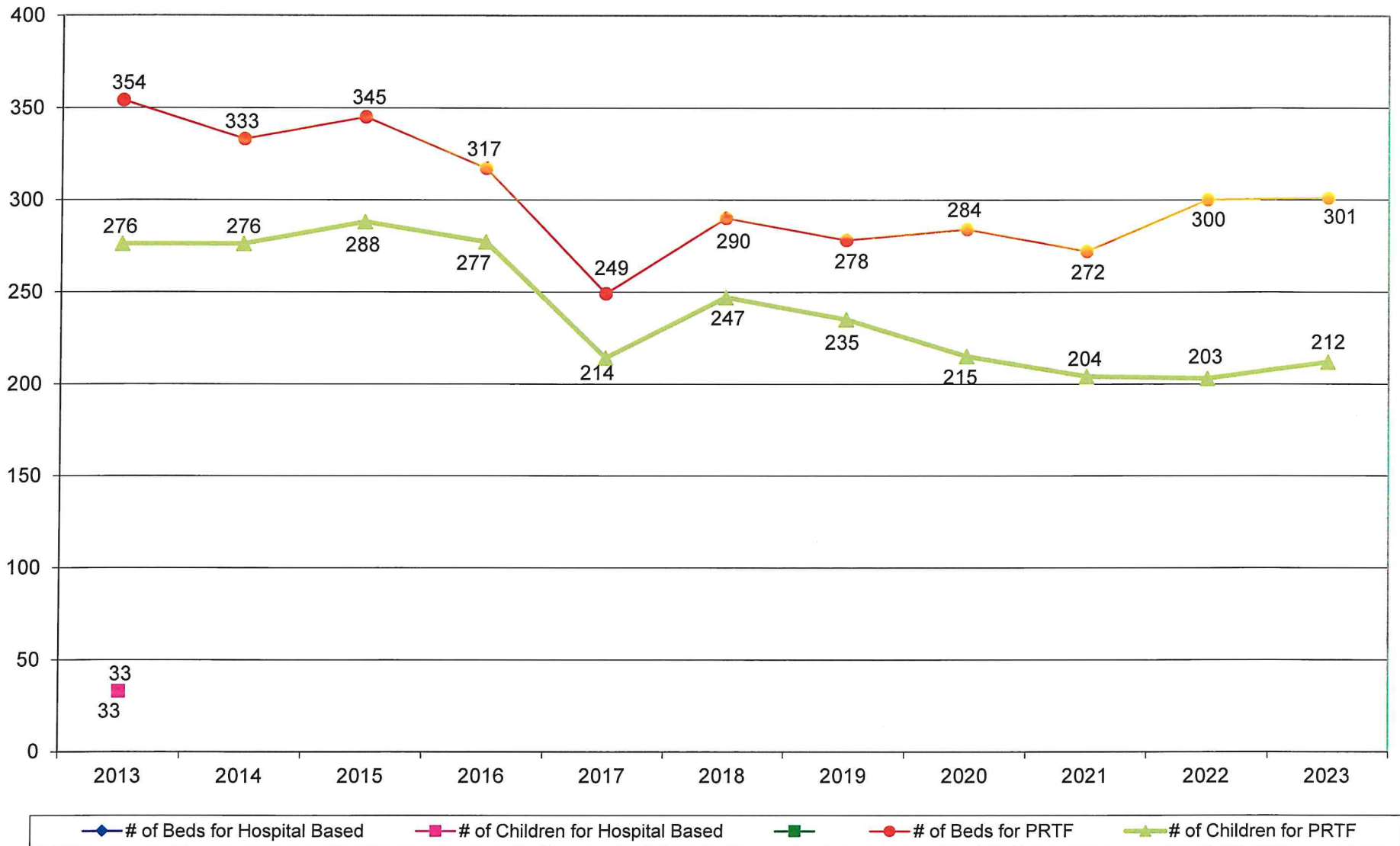
IARCA Survey of Children in Open Residential with On- Ground Schools



IARCA Survey of Children in Secure Care



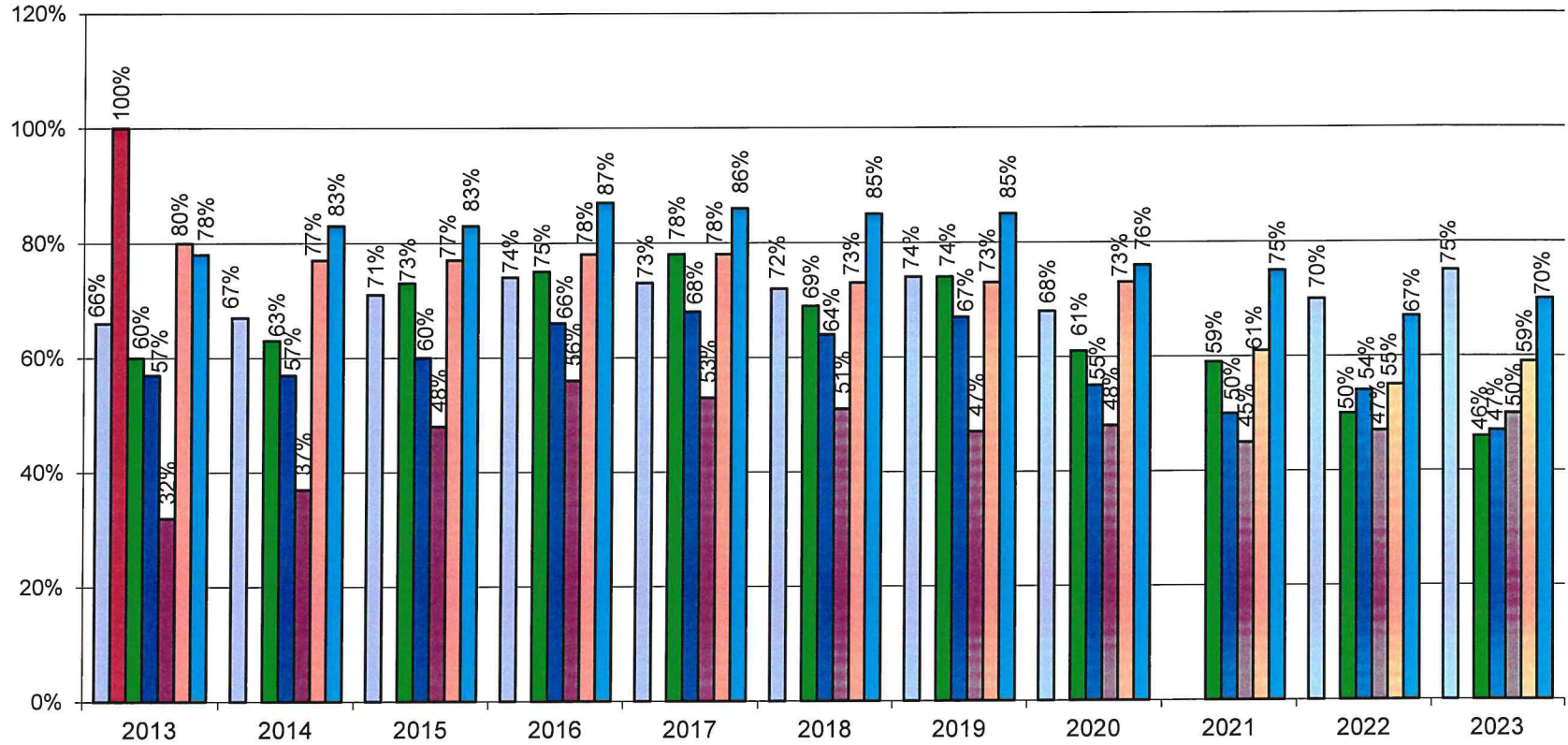
IARCA Survey of Children in Hospital-Based Residential Care and Psychiatric Residential Treatment Facilities (PRTF)*



* New Category in 2006

* Not Reported

IARCA Survey of Children in Residential Care Percent of Occupancy



■ Residential Care (All Types)
 ■ Hospital-Based Residential Care
 ■ Open Residential with On-Ground School
■ Open Residential Using Public School
 ■ Emergency Shelter Care
 ■ Secure Care
■ PRTF