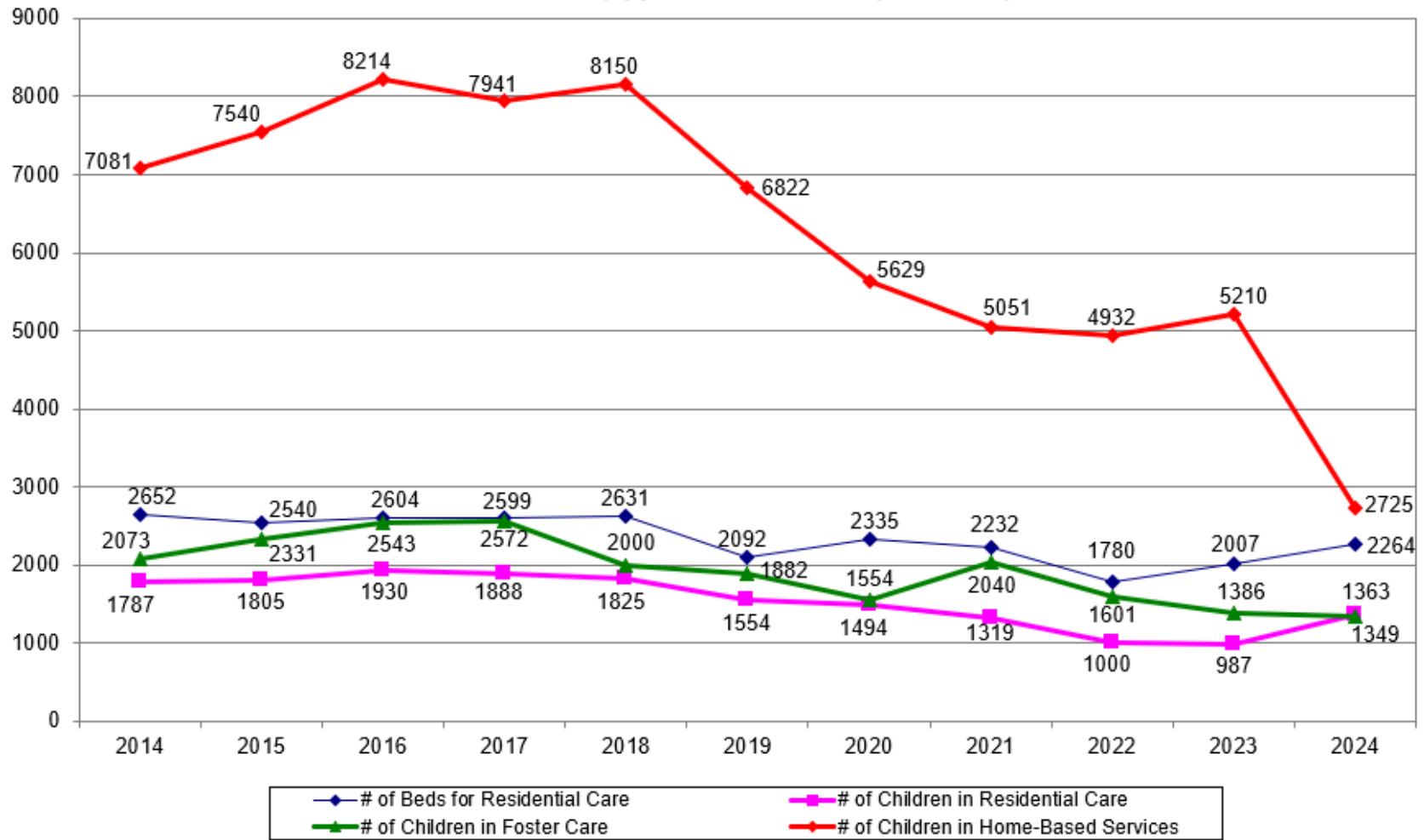
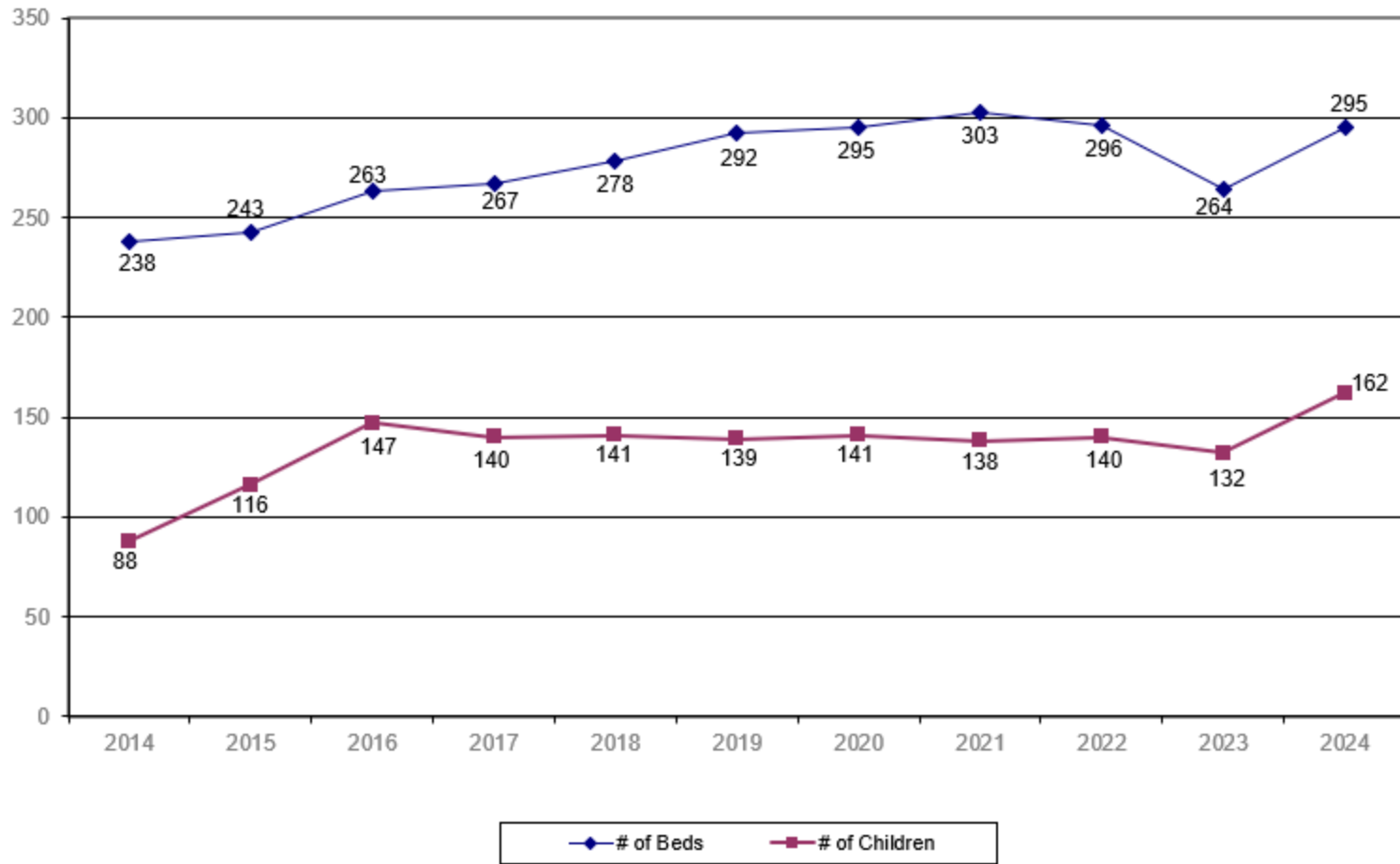


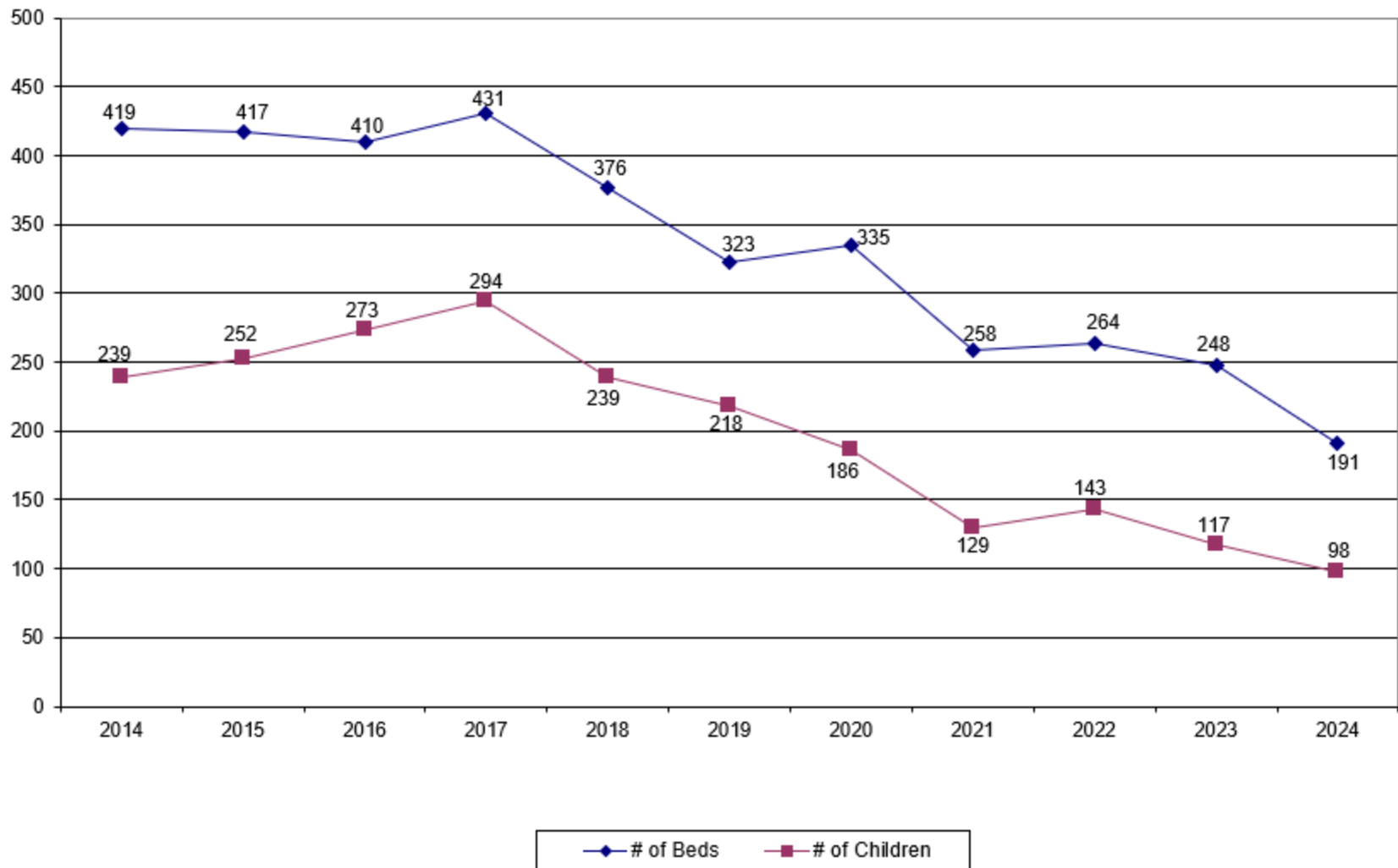
**IARCA Survey of Children Receiving Services from Participating Agencies
(approximate number per month)**



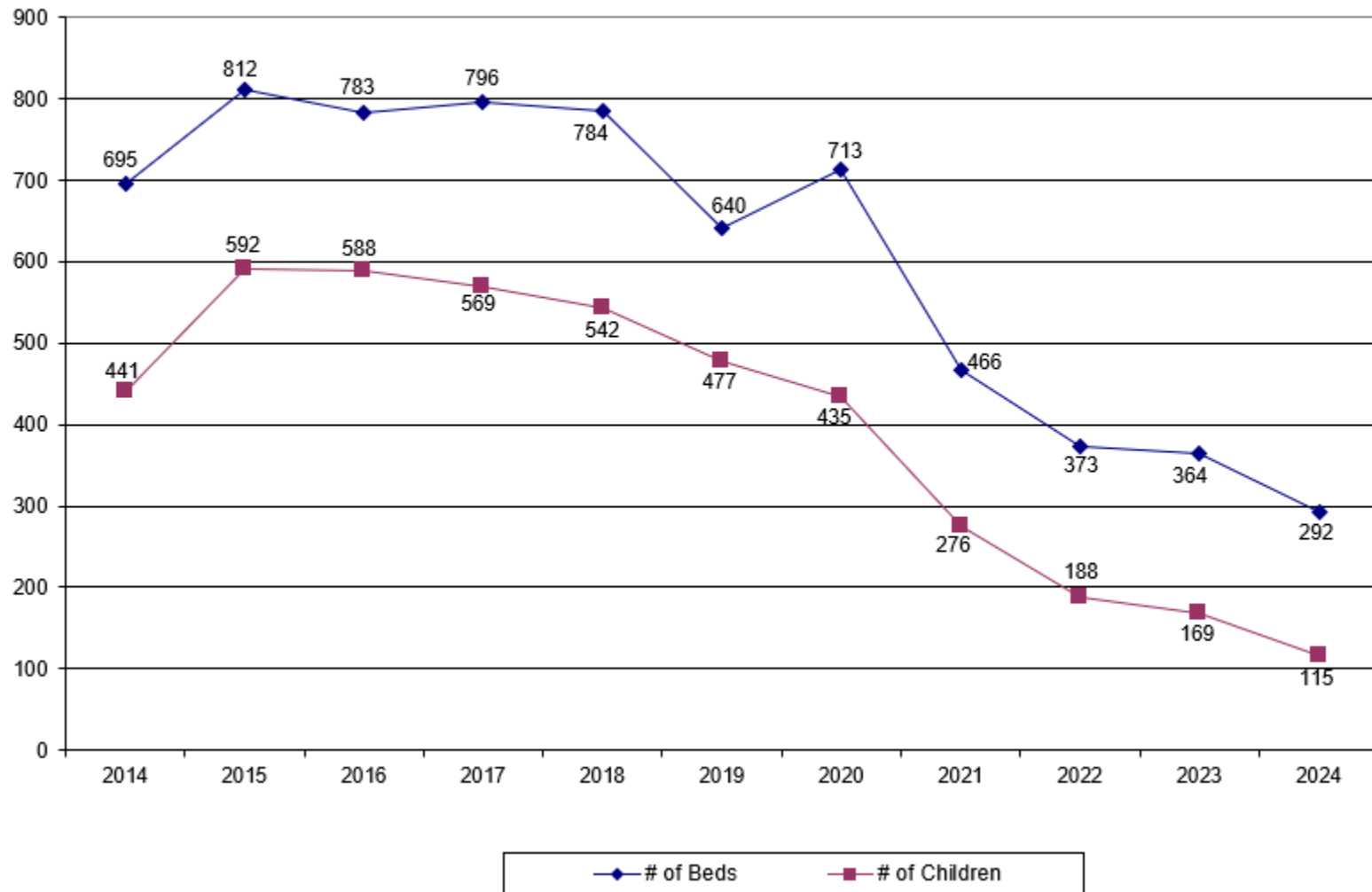
IARCA Survey of Children in Emergency Shelter Care



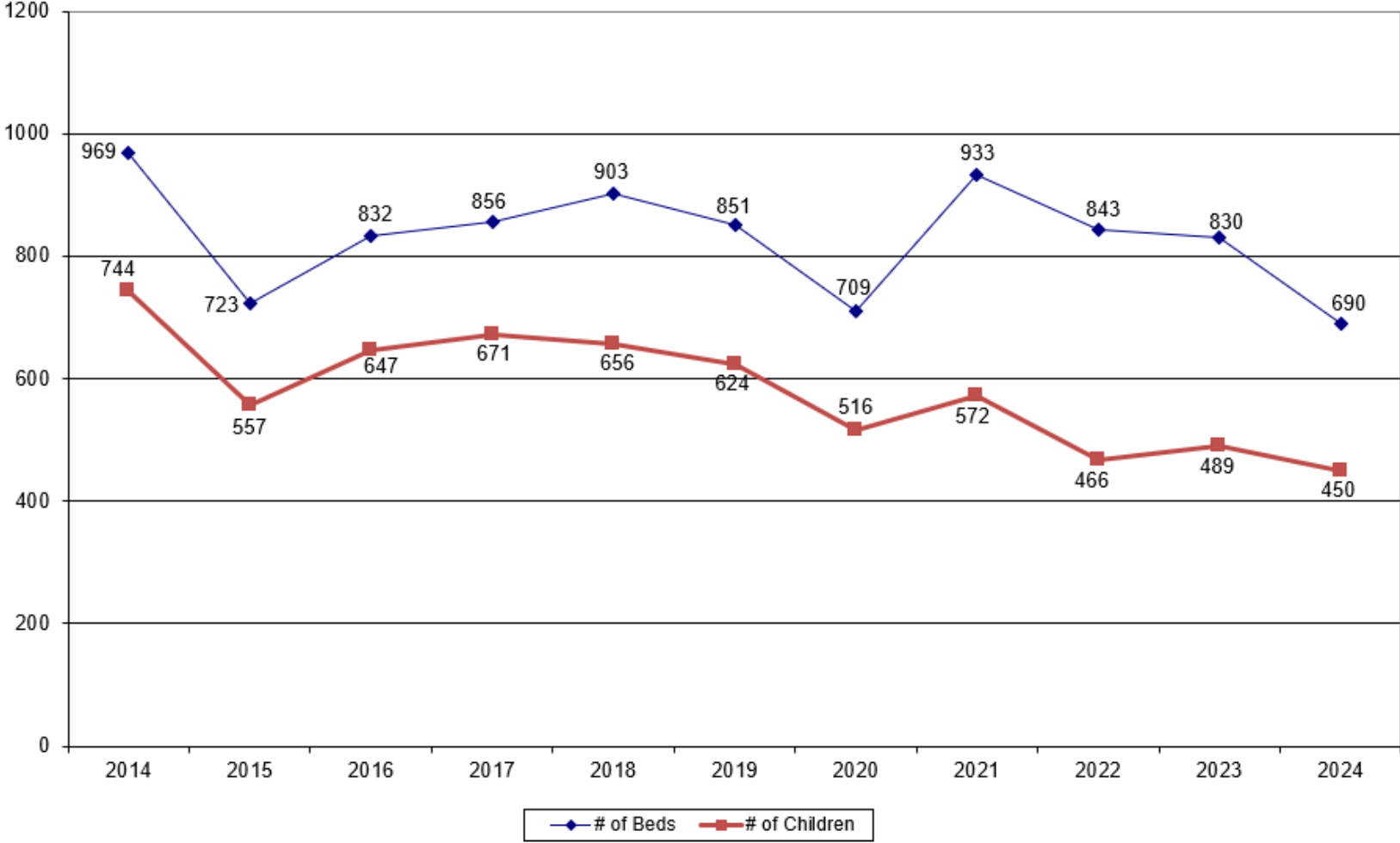
IARCA Survey of Children in Open Residential Using Public Schools



IARCA Survey of Children in Open Residential with On- Ground Schools



IARCA Survey of Children in Secure Care



IARCA Survey of Children in Residential Care Percent of Occupancy

